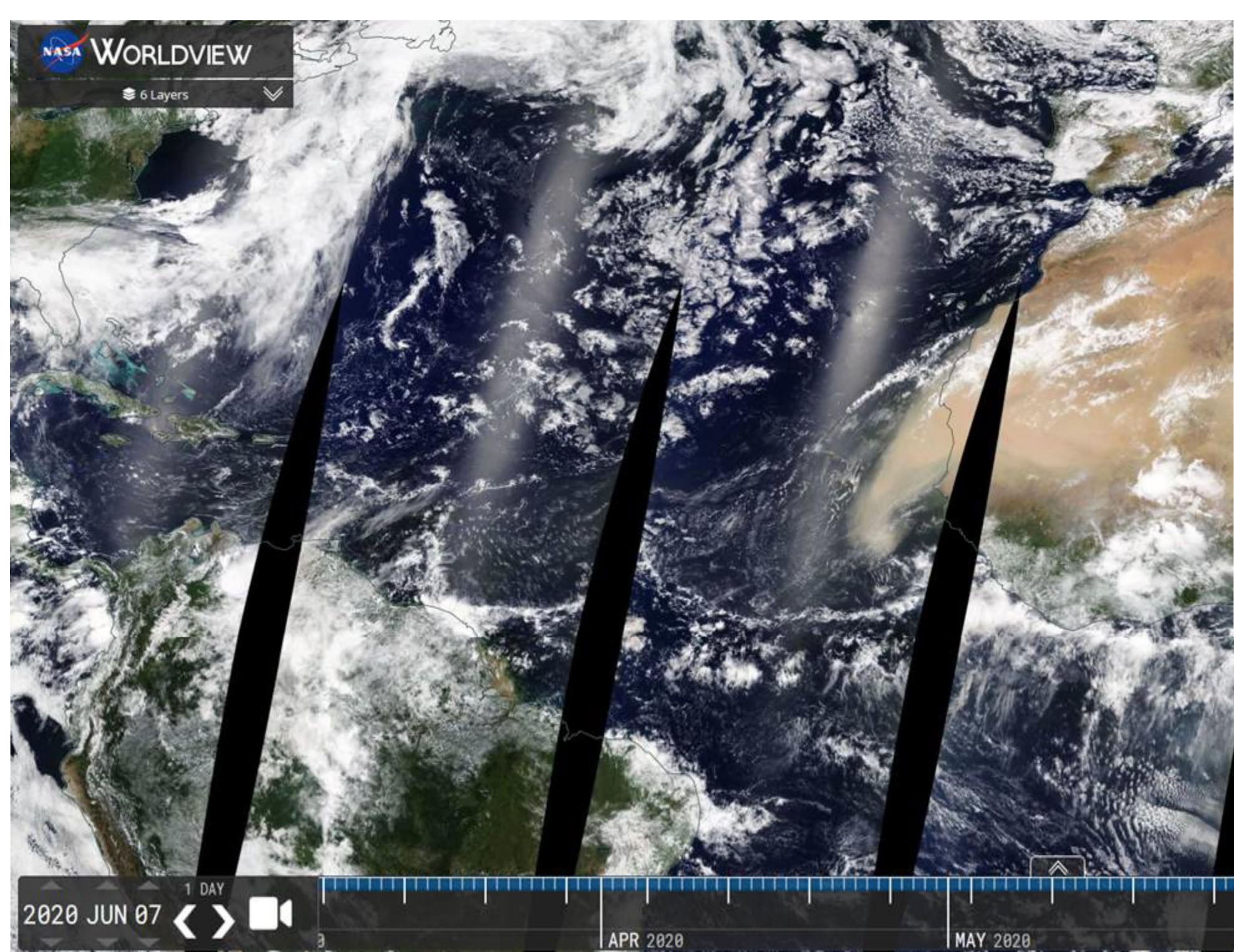


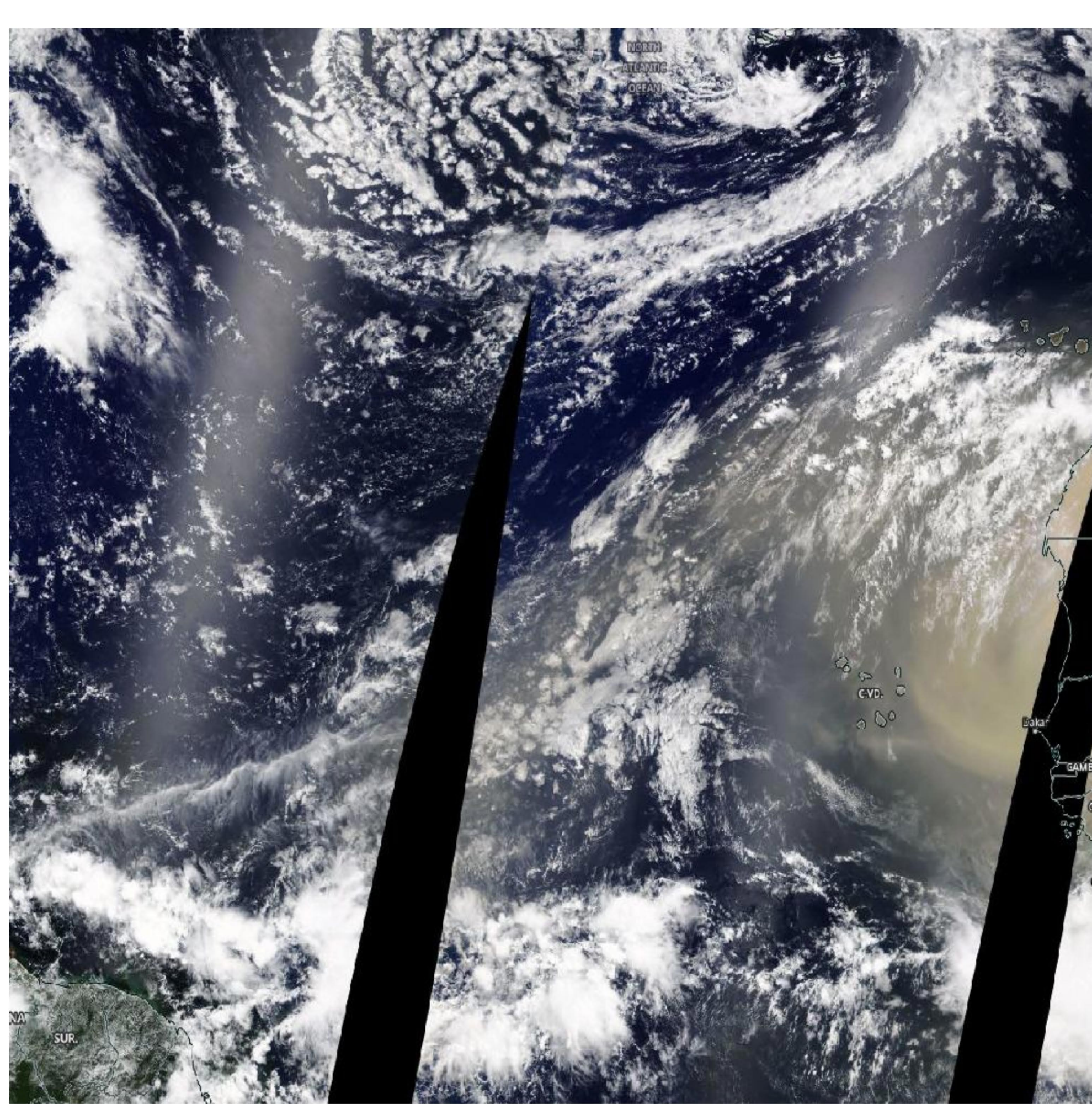
CAVEAT: The Dust Report is an informal ad hoc commentary on interesting African dust events. These reports should not be regarded as definitive statements on these events or their possible impacts.
Joseph M. Prospero

On 07 June an intense dust event emerged from the coast of West Africa.

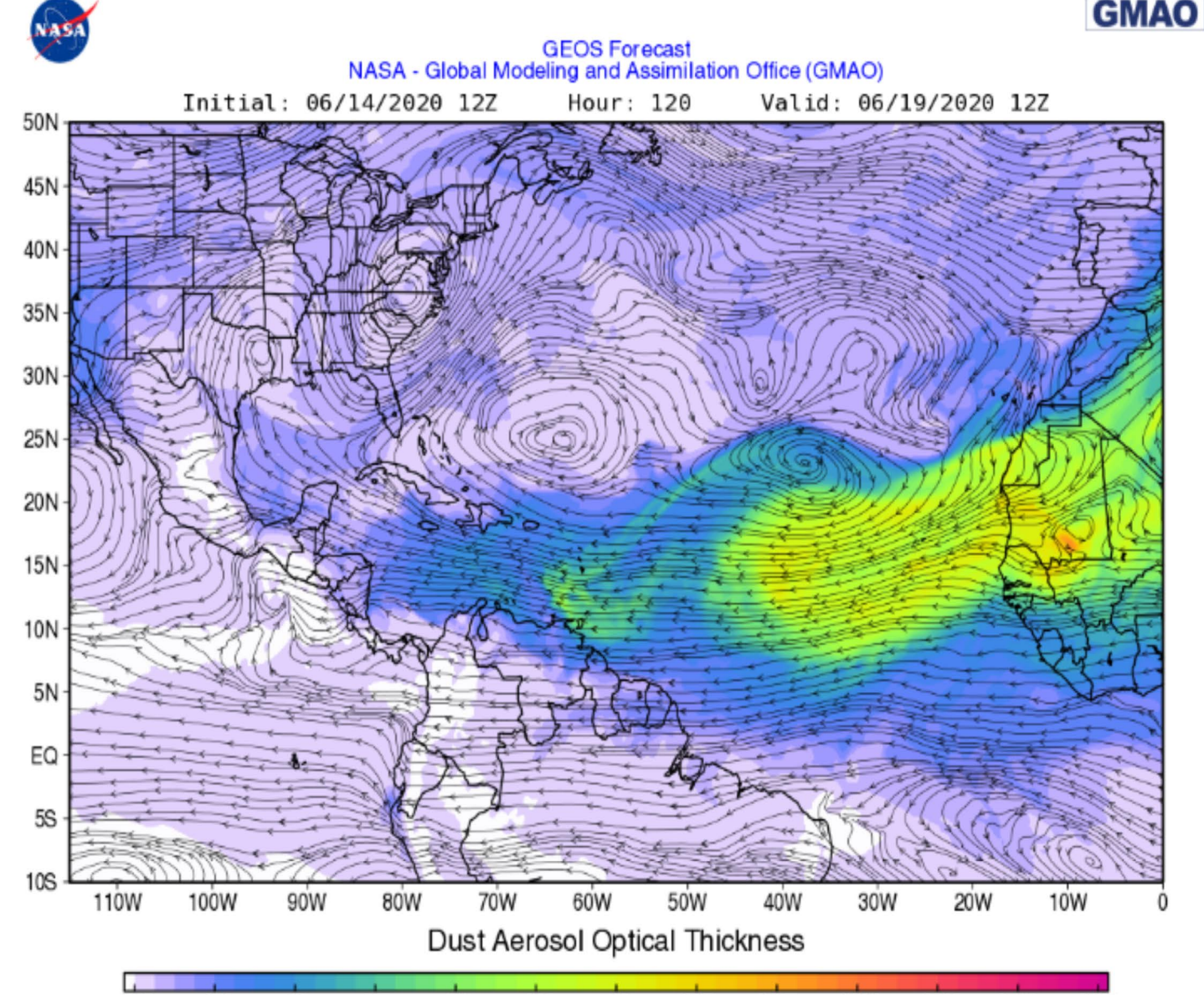
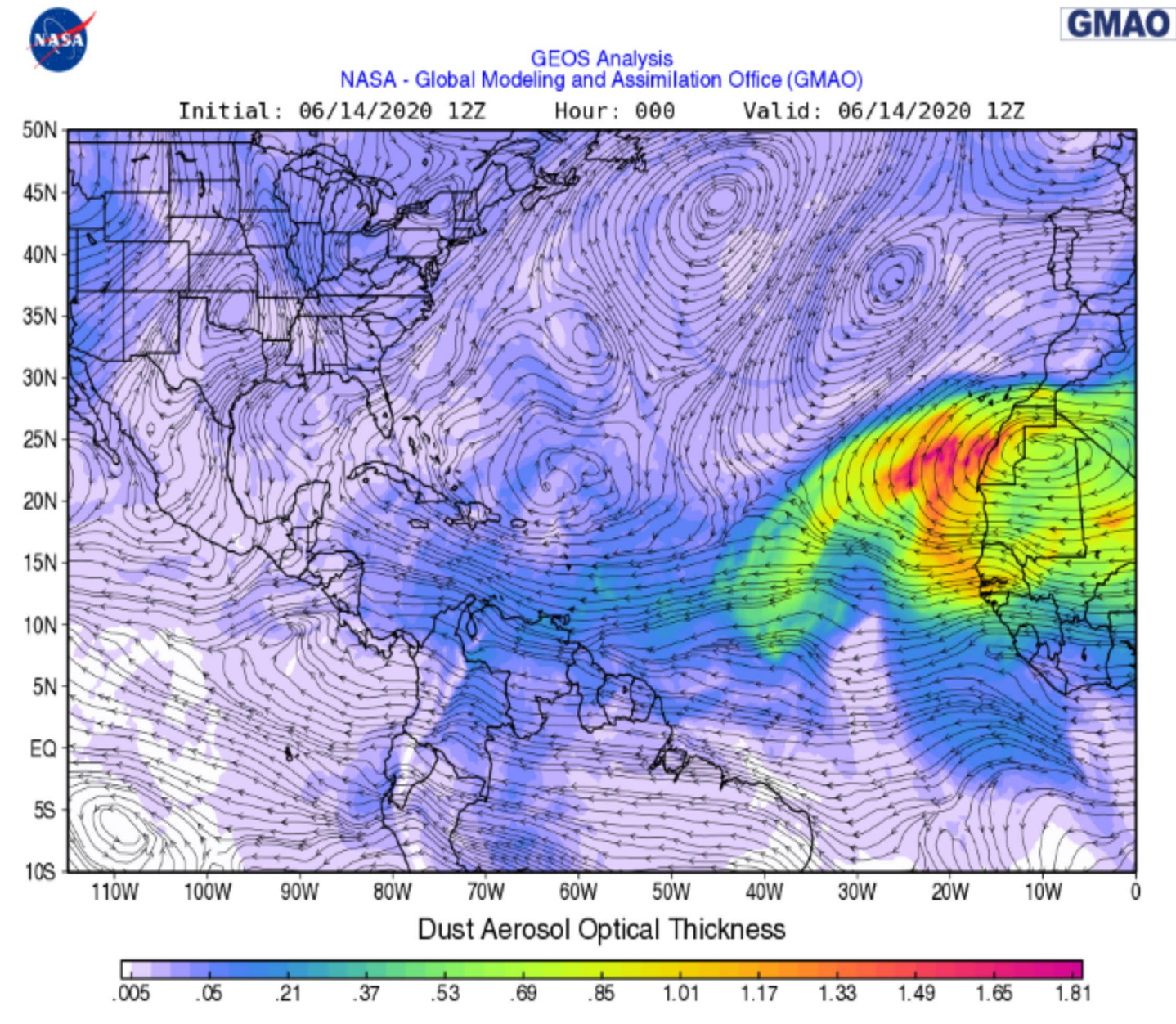


Now, 14 days later, we see another very intense event emerging from the coast from the same general region.

MODIS 14 June 2020



The NASA GEOS-5 Model shows the outbreak at the same time as the image above. The second plot below shows that by 19 June it will begin to impact the Windward islands.



Joseph M. Prospero
 Professor Emeritus, Department of Atmospheric Sciences &
 Rosenstiel School of Marine and Atmospheric Science, University of Miami
 4600 Rickenbacker Causeway
 Miami, FL
 33149-1098
 tel: 305-421-4159
 cell: 786-512-4159